



The Magnolia Blossom has more than one route to fun. Three great routes and one convenient location. Call for reservations and times.



Saint Paul Variety Cruise

Touring along Pike Island, past the mouth of the Minnesota River, Mendota Heights and its beautiful home on the bluff, Crosby Park,

Lilydale and Sandstone Bluffs with caves, ADC barge fleeting area through the Smith Ave. High Bridge, downtown St. Paul, and Harriet Island Regional Park.



Minneapolis Lock Cruise

Hidden Falls on the right, Minnehaha Park and Falls on the left, a great view of the water cascading over the dam, then pass through Lock &

Dam #1 to the pool at Riverside Park, Minneapolis Boat Club, East River Flats at the University of Minnesota, Saint Anthony Falls and Nicollet Island.



Minnesota River Nature Cruise

Scenic beauty around Pike Island past the cut-off of the west channel, below the Village of Mendota and landing pattern of the

International Airport, Snelling Lake, Fort Snelling State Park, Wild Life Preserve, under Mendota, 494, and Cedar Avenue Bridges, bluffs on the left and wetlands on the right, Black Dog Lake and Power Plant, Port Cargill and Savage, Minnesota.



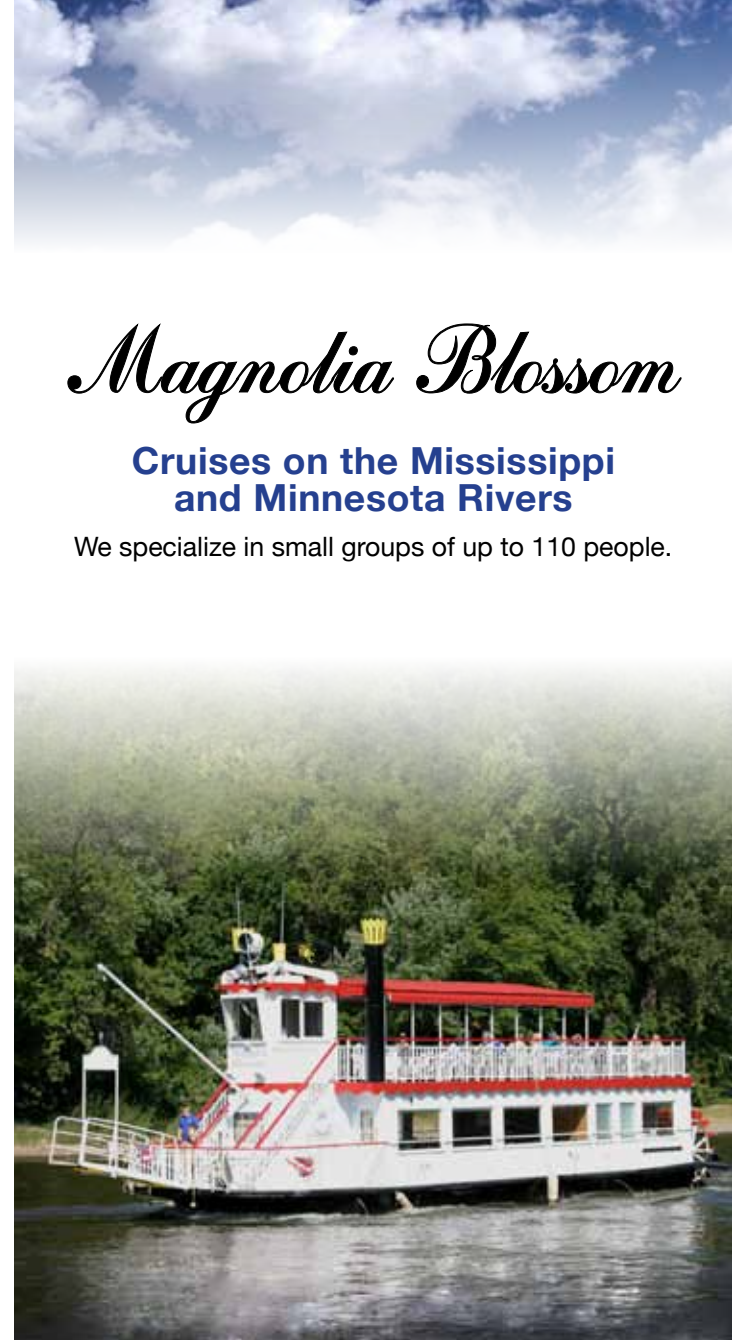
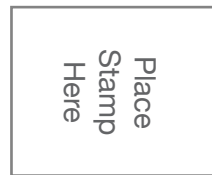
Find us on Facebook!

Visit our Website!



Magnolia Blossom Cruises
 Watergate Marina
 2500 Crosby Farm Road
 St. Paul, MN 55116

Welcome aboard the Magnolia Blossom!



Magnolia Blossom

Cruises on the Mississippi and Minnesota Rivers

We specialize in small groups of up to 110 people.

Magnolia Blossom Cruises
 Watergate Marina
 2500 Crosby Farm Road
 St. Paul, MN 55116
 (651) 690-2739
www.magnoliablossom.net



Cruises for All Occasions

Magnolia's staff will arrange everything including menu requests, entertainment and special decorations. You and your guests will receive impeccable service. It's the perfect venue. The Captain and vessel are United States Coast Guard certified.

Meeting & Conference Space Available!
LDC Screen & Presentation Equipment available upon request.



Weekday Packages:

Boat and food discounts are available before 4:00pm.

Meeting Packages:

We will set up the boat with the equipment needed for your meeting.
A minimum of a two-hour cruise is required.

School Packages:

School groups, programs with narration.
Box lunches are available.

Theme Cruises:

- Customer Appreciation
- Award Banquets
- Birthdays
- Retirement Parties
- Any group event you would like to put a new twist on.



Wedding Packages:

We understand that planning a wedding is sometimes an exhausting and stressful experience. We can help create your ultimate dream wedding. Make preparations economical and virtually

stress-free so you can concentrate on what is really important-embarking on a new life with the one you love.

We offer wedding packages specifically and individually designed for those that wish to be married on the Magnolia Blossom. We also do receptions and groom's or rehearsal dinners. The Magnolia Blossom will be set up for your wedding ceremony, and allow extra time for decoration.

All Inclusive Packages:

- Photography & Video Services
- Entertainment & Storyteller
- DJ Services & Live Entertainment
- Buses & Limo Service
- Cakes & Baked Goods
- Flowers & Decorating



Directions:

From Hwy 494 - Exit toward the International Airport onto Highway 5. Go past the Airport, across toward St. Paul. Take the first exit toward Shepard Road.
At the intersection, continue straight into Crosby Farm Nature Area. The Marina is at the bottom of the hill on the right.

From Hwy. 94 East or West - Take Snelling exit south and continue to West 7th Street. Turn right (west) onto West 7th Street. Go five blocks then turn left onto Davern Street. Take a slight right onto Shepard Road. Go one block to intersection at US Bank Building, turn left into Crosby Farm Nature Area. The Marina is at the bottom of the hill on right.

From Downtown Minneapolis - Take Highway 55 South, continue onto East 55. Take exit for Highway 5 East-towards Shepard Road. Cross over Shepard Road into Crosby Farm Nature Park. The Marina is at the bottom of the hill on the right.

From Downtown St. Paul - Follow Shephard Road west to the intersection at the US Bank Building. Turn left into Crosby Farm Nature Area. The Marina is at the bottom of the hill on the right. If you take Highway 5 (Fort Road) or West 7th Street from downtown, turn left on Davern Street going south then turn slight right onto Shepard Road. Go one block to intersection at US Bank Building, turn left into Crosby Farm Nature Area.

*Entrance to Crosby Park is at Shepard and Gannon Roads.

